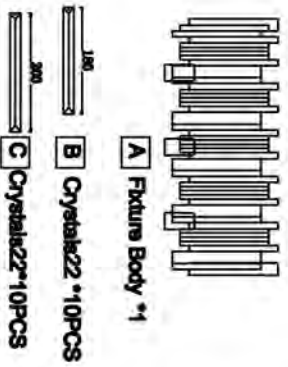


Assembly Instruction Sheet #S-1112W17-3 For Style 1112W17-3

Tools Required: Flathead screwdriver, Phillips screwdriver, pliers, wire cutters, wire stripper, electrical tape, safety glasses.
Light Bulbs: (2) E12 Candelabra Base Bulbs 60W Maximum(Not Included).
Individual Assembly Time: 30-40 minutes.
Preparation: Identify and inspect all parts before beginning installation. Check package content list and diagrams below to be sure all parts are present. If any parts are missing or damaged, do not attempt to assemble, install, or operate the fixture. Contact customer service for replacement parts.

⚠ Warnings and Cautions
 Turn off electricity at circuit breaker or main fuse box before installation. Consult a licensed electrician if in doubt.
 These instructions are provided for your safety. It is very important you read them completely before installing the fixture.
 We strongly recommend that a licensed, professional electrician perform the installation.
 Disconnect fixture from power source before replacing bulbs. Make sure bulbs are given sufficient time to cool before removal.

Package Contents



| PART | DESCRIPTION | QUANTITY |
|------|------------------|----------|
| AA | Mounting Balls | 2pcs |
| BB | Wire Nut | 3pcs |
| CC | Outlet Box Screw | 2pcs |
| DD | Mounting Screw | 2pcs |
| EE | Crossbar | 1pcs |

Figure 1

STEP 1 - Attach Mounting Screws, Lock Washers and Hex Nuts to Crossbar

A. Line up a set of holes on the Crossbar (EE) and Holes on the Backplate. Thread Mounting Screws (DD) into the holes on the Crossbar (EE). Pass Lock Washers and Thread Hex Nuts onto the Mounting Screws (DD). Hand tighten until snug.

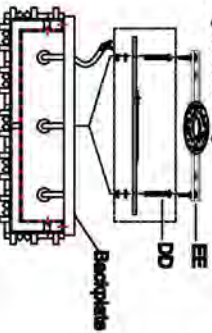


Figure 1

STEP 2 - Attach Crossbar to Outlet Box

A. Pass the supply wires through the Crossbar (EE). Attach the Crossbar (EE) to the Outlet Box (CC) with the Head of the Green Ground Screw (CC) Secures it with Outlet Box Screws (not included). Tighten until snug.

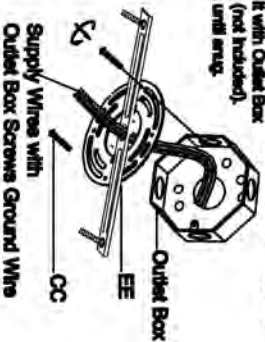


Figure 2

STEP 3 - Fit Backplate to Crossbar Assembly

A. Fit the ceiling canopy to Mounting Screws (DD) and secure with Mounting Balls (AA). Note: The Backplate should be snug against the wall and the Mounting Balls (AA). If not, adjust the length of the Mounting Screws (DD) by unscrewing the Hex Nut and Lock Washer and then screwing Mounting Screws (DD) in or out of the Crossbar (EE) until the correct length is achieved. Once the Backplate is secure, remove the Mounting Ball (AA) and Backplate and proceed to Step 5.

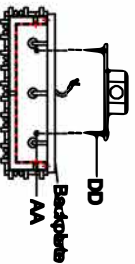


Figure 3

STEP 4 - Wire Connections

A. Use standard wire connectors to make all wire connections. Twist connectors until wires are **snugly** joined together. Wrap each connection with approved electrical tape and carefully stuff all the connected wires into the Outlet Box.

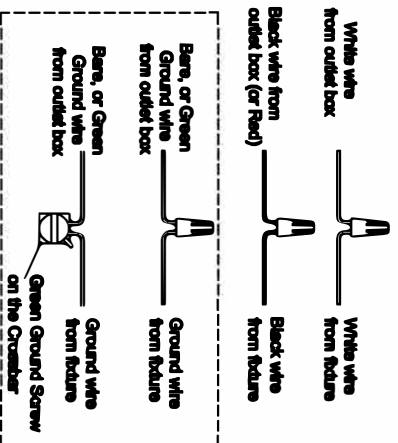


Figure 4

STEP 5 - Install Backplate to wall

A. Carefully tuck all wires into the outlet box and position the Backplate of the Fixture Body (A) over the outlet box. Align the holes in the Backplate with the Mounting Screws (DD). Secure with Mounting Balls (AA) and hand tighten until snug.

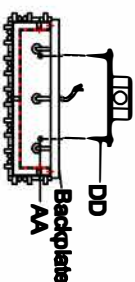


Figure 5

STEP 6 - Install crystal and Bulbs.

A. Install bulbs (Not Included) into sockets and push snug into place.
 B. Please put the crystal to the Fixture Body (A).

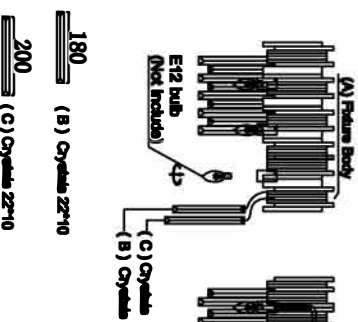


Figure 6