



# LOFT® RIGHT HEIGHT® ELONGATED ONE-PIECE TOILET WITH SEAT

VITREOUS CHINA

## LOFT® RIGHT HEIGHT® ELONGATED ONE-PIECE TOILET WITH SEAT

### □ 2535.128

- Vitreous china
- High Efficiency Toilet (4.8 Lpf/1.28 gpf)
- Meets EPA WaterSense® criteria
- One-piece design with side trip lever
- Space saving compact design - Elongated Right Height bowl fits in the same space as a round front toilet
- Includes EverClean® surface which inhibits the growth of stain and odor causing bacteria, mold, and mildew on the surface
- Elongated siphon action jetted bowl with 2-1/8" trapway
- Rim height at 16-1/2" (419mm) for accessible application
- Includes color matched and design matched solid plastic telescoping toilet seat and cover with slow close hinges and EverClean surface.
- 3" Flush Valve
- 9" x 8" water surface area
- 2 bolt caps
- Chrome Trip Lever
- 5 year warranty



### Nominal Dimensions:

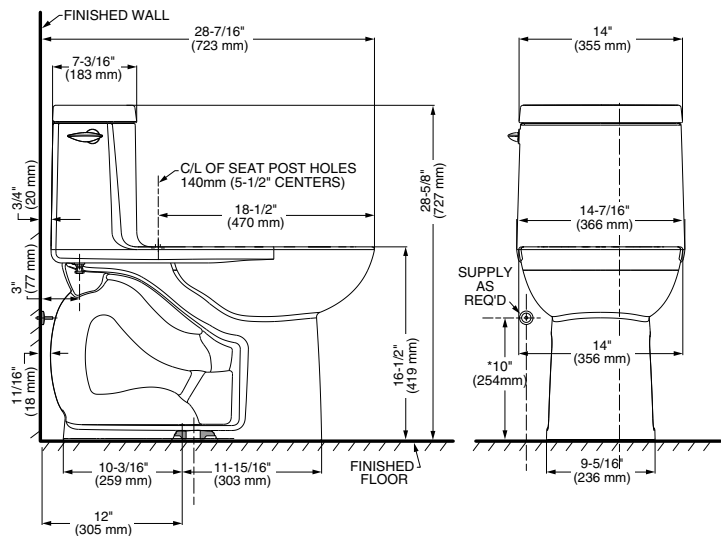
723 x 355 x 727mm (28-7/16" x 14" x 28-5/8")

Fixture only, supply by others

### Compliance Certifications -

#### Meets or Exceeds the Following Specifications:

- ASME A112.19.2-2008/CSA B45.1-08 for Vitreous China Fixtures
- US EPA WaterSense® Specification for HETs



#### NOTES:

THIS TOILET IS DESIGNED TO ROUGH-IN AT A MINIMUM DIMENSION OF 305MM (12") FROM FINISHED WALL TO C/L OF OUTLET. SUPPLY NOT INCLUDED WITH FIXTURE AND MUST BE ORDERED SEPARATELY. \* DIMENSION SHOWN FOR LOCATION OF SUPPLY IS SUGGESTED.

**IMPORTANT:** Dimensions of fixtures are nominal and may vary within the range of tolerance established by ANSI Standard A112.19.2. These measurements are subject to change or cancellation. No responsibility is assumed for use of superseded or voided pages.



MEETS THE AMERICANS WITH DISABILITIES ACT GUIDELINES AND ICC ANSI A117.1 REQUIREMENTS FOR ACCESSIBLE AND USABLE BUILDING FACILITIES-CHECK LOCAL CODES.

